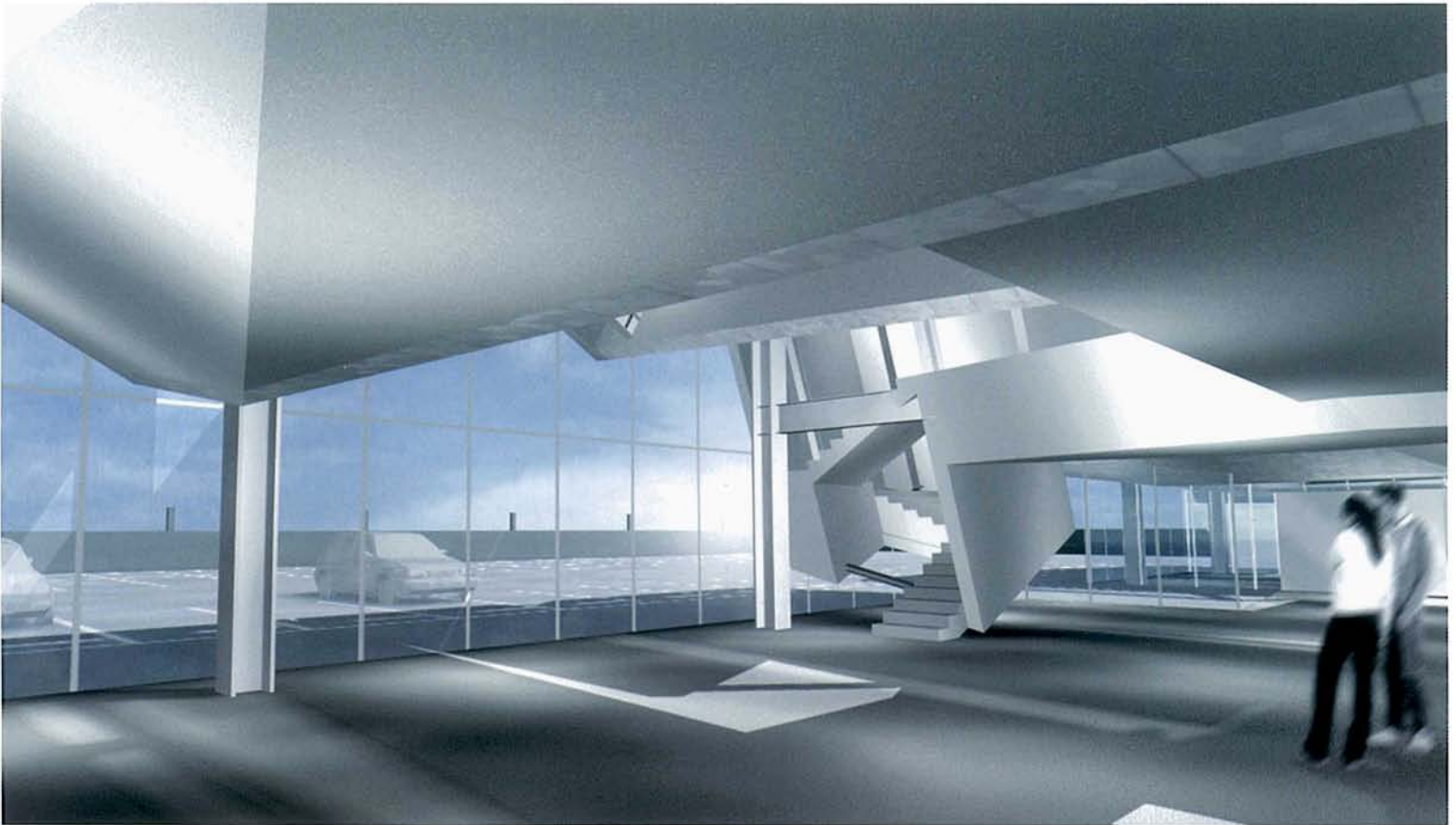


Automobile Architecture

Chris van Uffelen

P
A
R
K
I
N
G

BRAUN

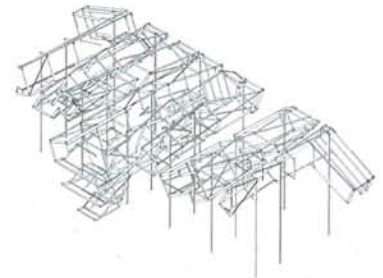
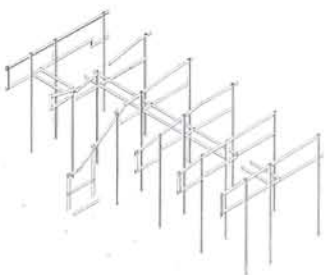


↑ | Office interior with parking outside
↓ | Diagrams, structural framing

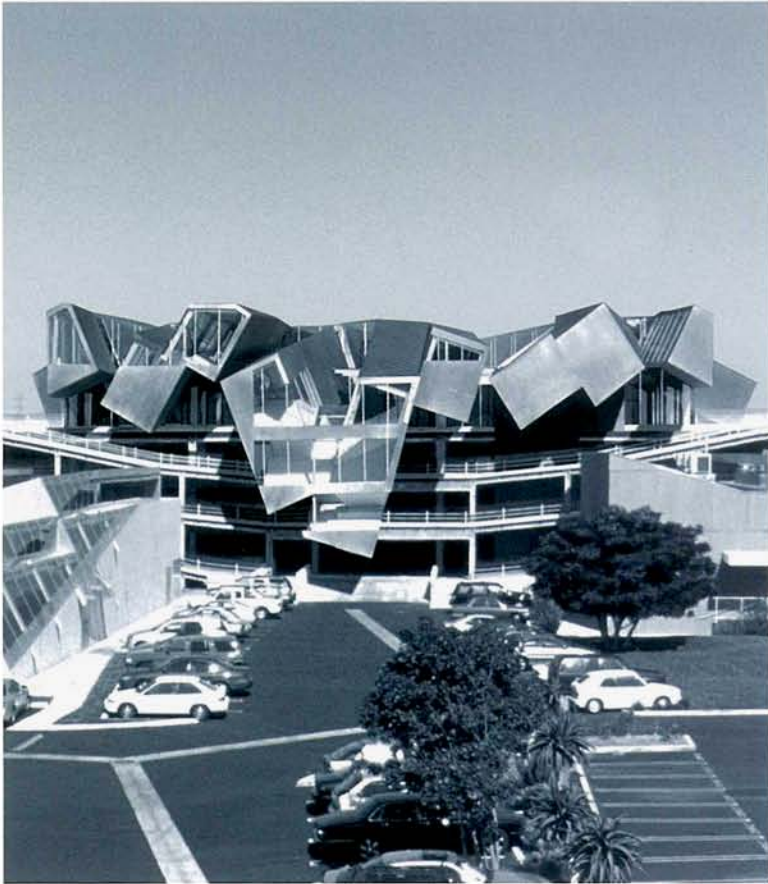
Pterodactyl

Culver City

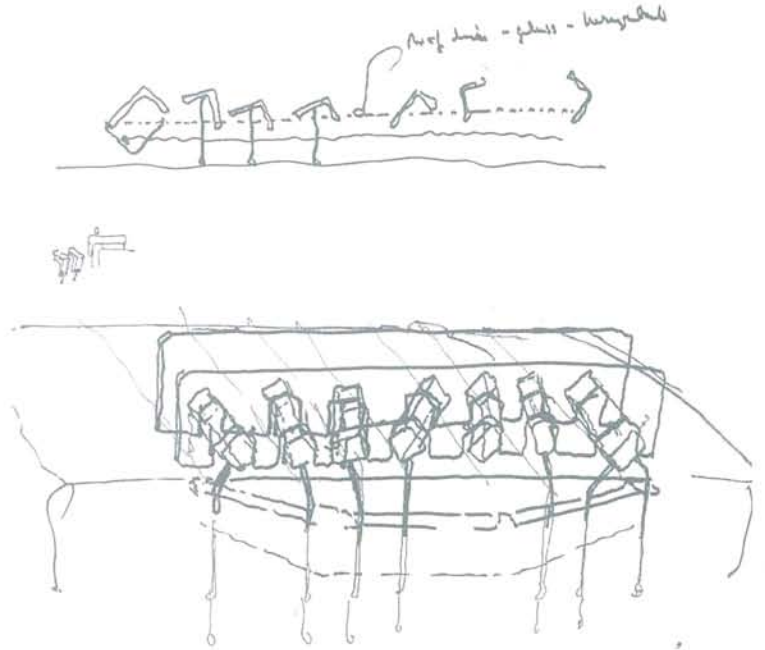
The Pterodactyl includes an office building with parking garage on a vacant site opposite the stealth in a complex of new and remodeled buildings in Culver City. The parking structure is composed of four stories, an open steel frame with blown-on fire proofing covering the structural steel. The entry elevation expresses the automobile movement system by stacking both entry and exit ramps on the west garage face. Automobile entry is at the visual center of that elevation, between the two ramps. The 800 car structure is the conceptual podium for the rooftop office building. Buildings in the area are three floors or less, so the office building on the roof offers spectacular vistas of the entire city from downtown to the Santa Monica mountains to the westside of Los Angeles and the Pacific Ocean.



Address: 3540 Hayden Avenue, Culver City, CA 90232, USA. Client: Frederick and Laurie Samitaur Smith. Completion: ongoing. Gross floor area: 158,000 m². Main materials: steel, concrete, aluminum. Setting: industrial.



↑ | Front elevation of building, with office boxes



↑ | Hand sketch of proposal
↓ | Office building interior

