

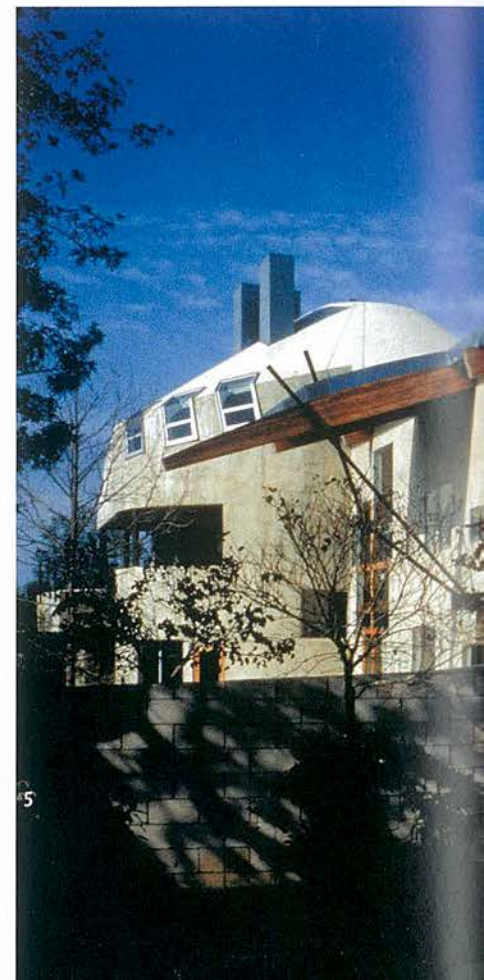
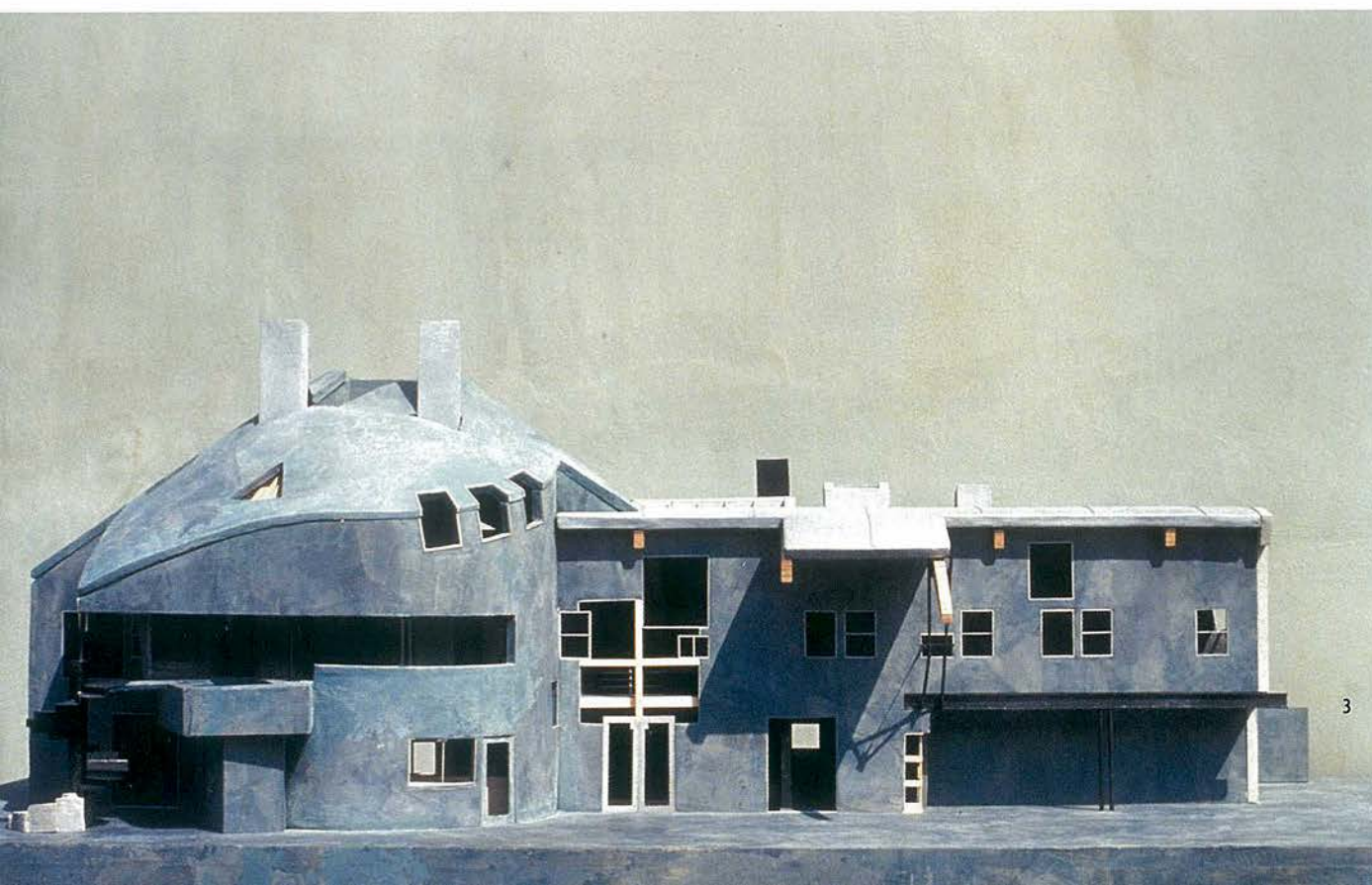


Masterpiece
ICONIC Houses

BY GREAT CONTEMPORARY ARCHITECTS

Edited by Beth Browne

images
Publishing





LAWSON-WESTEN House

Los Angeles, California, United States

ERIC OWEN MOSS ARCHITECTS



The house is positioned on the north side of a 25- by 55-metre (80- by 180-foot) suburban site, creating an L-shaped garden on the south side and west end. The clients' very particular building programme was a thoughtful reflection of how they live day to day, and how the housing of their substantial art collection should interrelate with the resolution of their practical concerns.

The kitchen, an entertainment and gathering space for family and friends, is the social centre of the home. Its three-level cylindrical volume – sometimes closed, sometimes open – contains the first-floor dining and cooking areas, with living spaces of various types attached to the open volume on the first, second and third floors.

-
- 1 West elevation and garden
 - 2 Exterior detail of corner window
 - 3 Physical model, west elevation
 - 4 South elevation, entrance
 - 5 Street view showing southernmost poured-in-place concrete wall

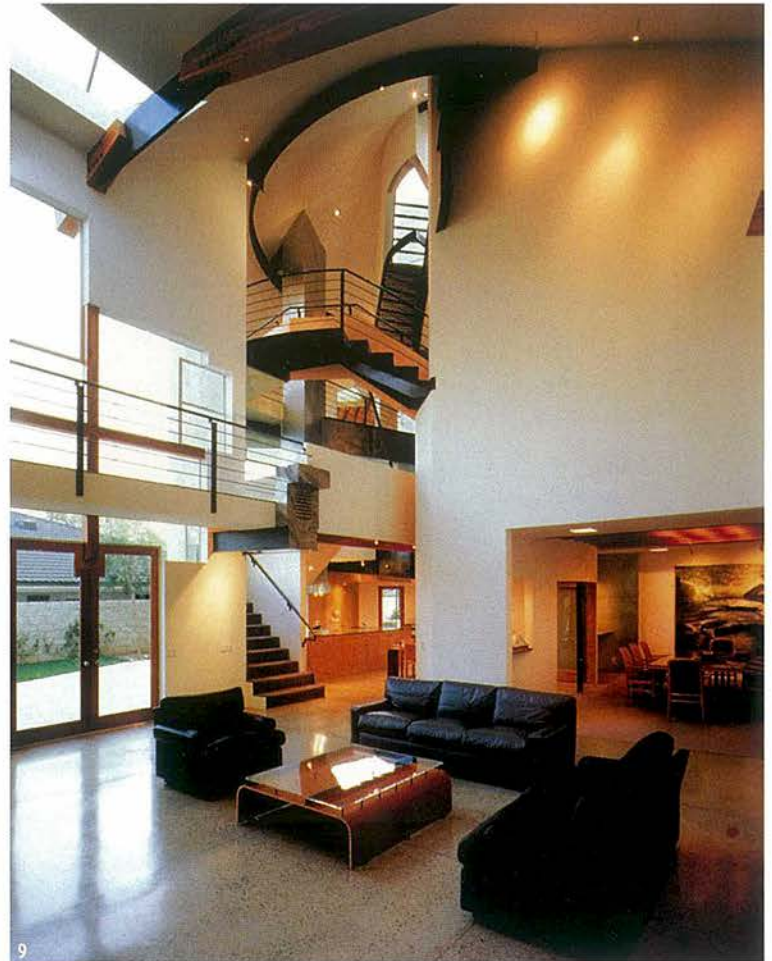
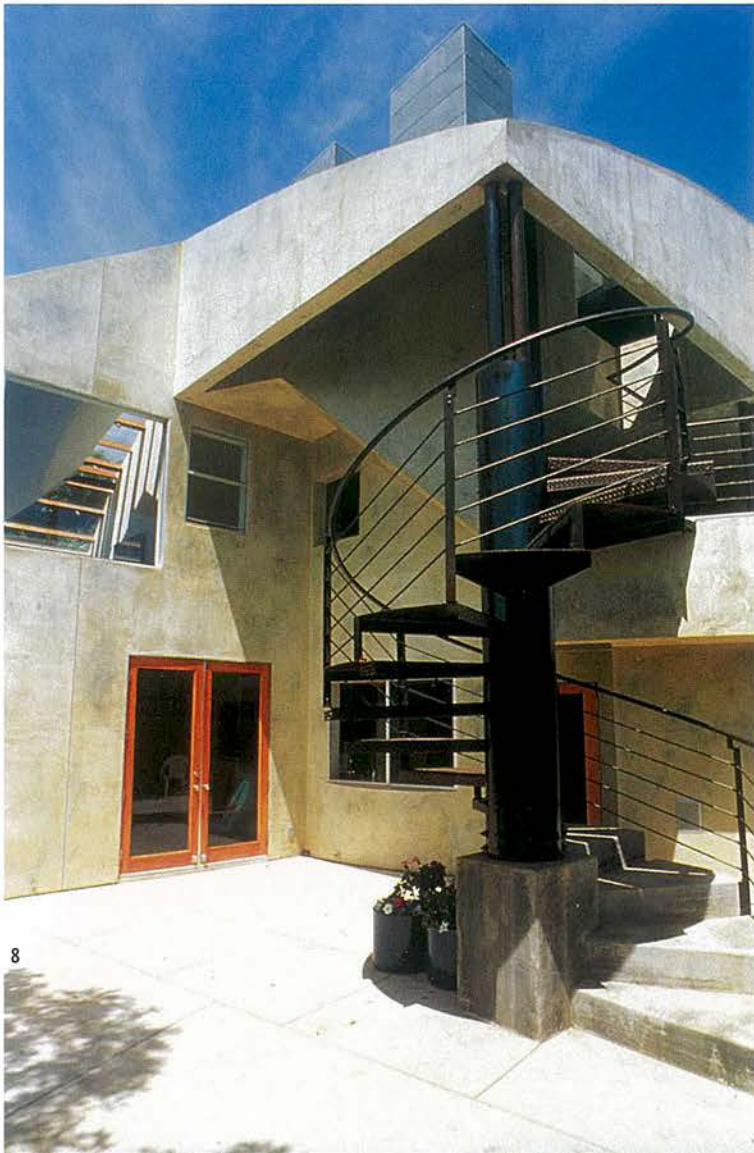


A second-floor walkway connects the adults' sleeping area – which is adjacent to the cylinder on the west – with the children's sleeping area at the east end of the house. The bridge passes above and through the triple-height living room, then proceeds through the second level of the cylinder to the adults' bedroom and bathroom. Within the cylinder, the bridge meets a stair that rises – following the profile of the cylinder wall and hanging out over the kitchen and living room areas – to a third-floor study at the top of the cylinder. Another stair, following the curve, leads up to a small outdoor deck.

The street-facing façade is poured-in-place concrete, while the remainder of the exterior building walls are smooth cement plaster. The building investigates window types, and represents those types as an assembly of windows – a single large window made of a number of pieces – on the south elevation next to the garden. This window represents, in the aggregate, all the window types that are found singly elsewhere on the exterior walls of the structure.

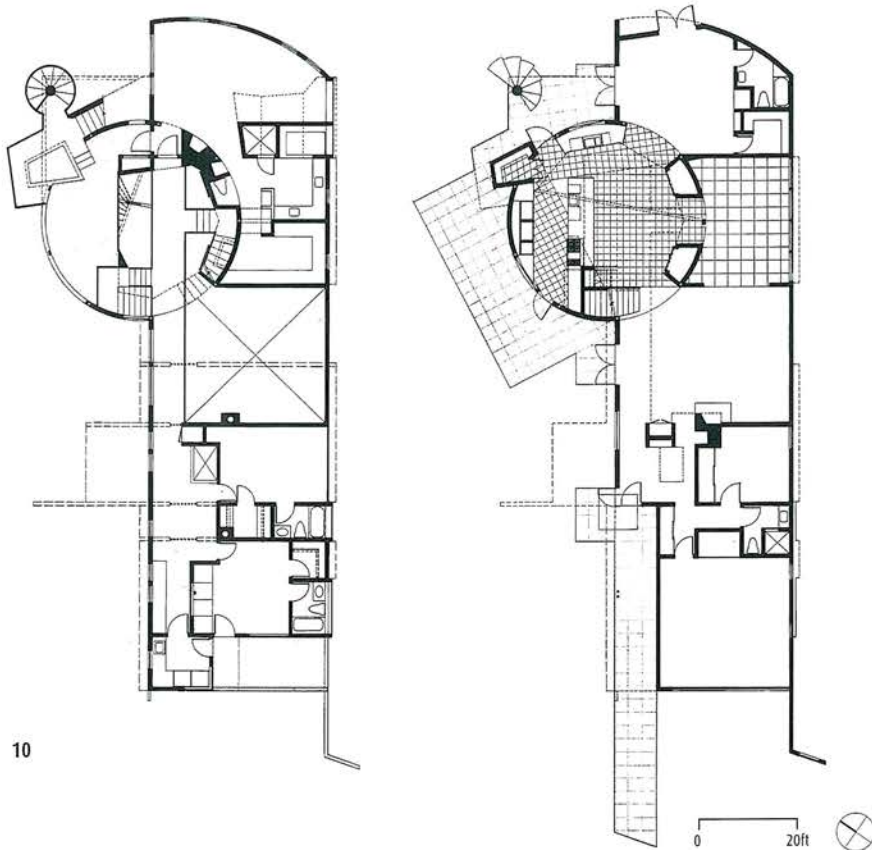
Geometrically, the centre of the cylinder's conical roof shape is not synonymous with the centre of the cylinder. This explains why the intersection between the cone roof and cylinder is a line that rises and falls, rather than the horizontal line that would separate the two if their centres were the same.

-
- 6 North elevation, backyard
 - 7 Conical roof and intersecting cylinder shaft beyond
 - 8 Spiral stairwell leading to outdoor deck
 - 9 Triple-height living area, kitchen and dining beyond



- 10 Site plan, first and second floors
- 11 View from second-floor bridge; cone and cylinder intersect
- 12 View down to kitchen from top of cylinder
- 13 Master bedroom
- 14 Second-floor bridge connecting to stair that follows profile of cylinder wall

PHOTOGRAPHY: © ERIC OWEN MOSS (3, 10); © TOM BONNER (1, 2, 4-9, 11-14)



10



11



12

